



VIKING
SPAS

EXPERIENCE

2021

Viking Spas Experience

Viking Spas is a family-owned company where attention to detail and satisfying customers needs have defined our success in the hot tub industry for over 45 years.

Our commitment to building a hot tub that provides the best value, therapy, comfort and safety are the keys to our designs.

We assure that our spa is about you, your health and long-lasting enjoyment. One that is designed with a purpose and value that is unrivaled in our industry.

From our family to yours ... enjoy your Viking Spa!



Presidential E-Award Recipient

Our dedication to providing a great product to countries around the world has garnered Viking Spas this prestigious award. To date, no other spa manufacturer can claim this honor.



Photo: @maritfolland



Hydrotherapy

Better Sleep

Arthritis Relief

Stress Free

Family Time

Date Night

The SPA Experience

The personal testimonies from our spa users reinforce the advantages that a Viking spa provides.

The hydrotherapy experience is a personal getaway, leaving you refreshed and restored each day.

Warm, soothing water has proven to relieve stress, aching muscles and arthritis.

Appealing to all generations, a spa is a fountain of youth designed for the pleasure and benefit of your entire family.

Unwinding together at the end of the day, couples can share conversation and relaxation in a stress free environment.

Experience a complete wellness transformation of mind, body, and spirit in a Viking Spa.

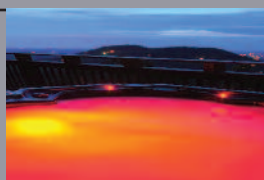
Mindful of What is Essential and Desired

Selecting the right spa is actually a very easy process. Built with the highest quality components, the right spa provides the best hydrotherapy experience combined with industry leading safety standards and warranty.

At Viking, we are proud to offer great value in all of the spas we produce. We provide many different selections to assure that the spa you fall in love with will be at a comfortable price.

We include many desirable "options" as standard features in the majority of our spas. This includes dazzling LED lighting, automatic sanitizing ozonation, and cascading water features. Additionally, we proudly offer a Soft-Touch™ slip resistant surface and modern stainless steel jets in all of our spas!

With the backing of our industry leading warranty, you can truly sit back ... and relax!



LED Lighting



Cascading Water Feature



Stainless Steel Jets



Soft-Touch™ Slip Resistant Surface





Photo: Tine Witnes @tinewitnes



Our Standards are High

Through rigorous testing, we have engineered our energy efficiency to meet the demands of the California Energy Commission. Although not required by any other state, we accepted the challenge to ensure that our customers receive a spa that is truly energy efficient.

Over the last 45 years, we have been a leader in the evolution of the spa industry.

Through our innovation, we have implemented advanced energy efficient materials, touch screen controls, app controlled wifi and a bluetooth halo discovery stereo system. Additionally, we have developed shiatsu vibrating therapy, AirX soft tissue massage and incredible volcanic massage jets. Finally, you would swear that our wipe clean cabinets are made from real wood.

Maybe our mindset is a little different than most, because we are not driven to be the biggest ... only the best.



Welcome to the Lifestyle You Deserve



Performance Packages and Options

ARCTIC

- **Reflectix Insulation**

Add an enhanced blanket of insulation to reflect heat back into the interior of the cabinet.

- **Foam Board Insulation**

Great for sound dampening and an additional level of insulation. The one inch foam is installed between the uprights of the spa cabinet.

- **Deluxe Cover Upgrade**

(not available on round spas)
Features a black Elegance fabric material.

TECH

- **SpaTouch™ Panel**

Featuring the latest in touch screen convenience, the BP power system option provides many integrated and intelligent functions. It is able to sync with your Balboa Bluetooth Audio stereo system (BBA) and is wifi ready.

- **BBA Premium Audio** -

With a full speaker in every corner, this premium stereo pairs to your bluetooth device and delivers an unbelievable quadrosonic sound.

THERAPY

- **AirX Soft Tissue Therapy**

AirX infuses the soft feel of air and water in a revolutionary new therapy experience. Utilizing airnetic engineering, AirX increases the air output for the jet stream.

- **Vibrosonic Deep Tissue Therapy**

These unique vibrating jets provide a “shiatsu” deep tissue massage that you can not find in any other spa. Depending on your needs, the massage can be personalized to be soft and gentle or more vigorous to relieve nagging muscle pain.



The ULTIMATE Package!
(All 3 packages in 1)*

* The Ultimate Package is available on the Legacy 2, Legend 2, Heritage 2 and Tradition 2.

PLUG-N-PLAY SERIES

Ready to go, just fill with water and plug it in!



Photo: Tine Witnes @tinewitnes

KEY STANDARD FEATURES

	VIKING P	VIKING 2P	AURORA P	AURORA P+	REGAL P	REGAL P+	ROYALE P	ROYALE P+	NOTES
Total Jets	9	20	17	21	17	21	17	21	
1 PUMP, 1 Horsepower	•	-	•	-	•	-	•	-	
1 PUMP, 2 Horsepower	-	•	-	•	-	•	-	•	
Lifetime Shell Warranty	•	•	•	•	•	•	•	•	
Soft-Touch™ Slip-Resistant Surface	•	•	•	•	•	•	•	•	
His-n-Her Captain Seats	-	-	-	-	•	•	•	•	
Three-Directional Swivel Seats	-	-	-	-	•	•	•	•	
Lounger	-	-	•	•	-	-	•	•	
Neck Jets with Comfort Pillows	-	-	-	-	-	•	-	•	
Cup Holders	•	•	•	•	•	•	•	•	
Cascading Water Feature	-	-	•	•	•	•	•	•	
Balboa™ BP100 Convertible System 120v 15amp/240v 40amp	•	•	•	•	•	•	•	•	
1kw Heater Convertible to 4kw Heater	•	•	•	•	•	•	•	•	
50 Square Foot Filtration	-	-	•	•	•	•	•	•	Viking P & 2P Installed with 20 Square Foot Filtration
Stainless Steel Accented Jets	•	•	•	•	•	•	•	•	
InfiniTree™ Premium Select Cabinet	-	-	•	•	•	•	•	•	Viking P & 2P InfiniTree Standard Cabinet
24 LED Points of Light Including Perimeter and Exterior	-	-	-	•	-	•	-	•	
2lb Density Polyurethane Closed Cell Foam	•	•	•	•	•	•	•	•	Certified to California Energy Commission (CEC) Standards
Resin Floor Constructed Cabinet	•	•	•	•	•	•	•	•	
4" to 2.5" Tapered Density Foam Core Cover	•	•	•	•	•	•	•	•	

KEY OPTIONAL FEATURES

Contact Chamber Ozone Injection Sanitizer	o	o	o	o	o	o	o	o	
Reflectix Insulation	o	o	o	o	o	o	o	o	
Foam Board Insulation	o	o	o	o	o	o	o	o	
SpaTouch™ Balboa BP power system upgrade	-	-	o	o	o	o	o	o	Stereo offered with BP100
BBA (SpaTouch™) Integrated Bluetooth Premium Audio	-	-	-	-	-	-	-	-	Is Available when Ordering with a SpaTouch™
Bluetooth Stereo System	-	-	-	-	-	-	-	-	

• Standard o Option - Not available. Please consult your local Viking Spa Retailer for details.

Viking 2P



Viking P & 2P

DIMENSIONS: 72" Round / 183 CM
VIKING P DEPTH: 32" / 81 CM
VIKING 2P DEPTH: 35" / 89 CM
CAPACITY: 250 GAL / 946 LITERS
WEIGHT (NO WATER): 300 LBS / 136 KG
JETS: 9 (P), 20 (2P)
SEATING: 4-5



Viking P

Aurora P & P+

DIMENSIONS: 60" x 84" / 152 CM x 213 CM
AURORA DEPTH: 34" / 86 CM
CAPACITY: 210 GAL / 795 LITERS
WEIGHT (NO WATER): 395 LBS / 179 KG
JETS: 17 (P), 21 (P+)
SEATING: 2-3



Aurora P

Aurora P+



Regal P+



Regal P & P+

DIMENSIONS: 78" square / 198 CM
REGAL DEPTH: 34" / 86 CM
CAPACITY: 290 GAL / 1,098 LITERS
WEIGHT (NO WATER): 495 LBS / 225 KG
JETS: 17 (P), 21 (P+)
SEATING: 5-6

Regal P



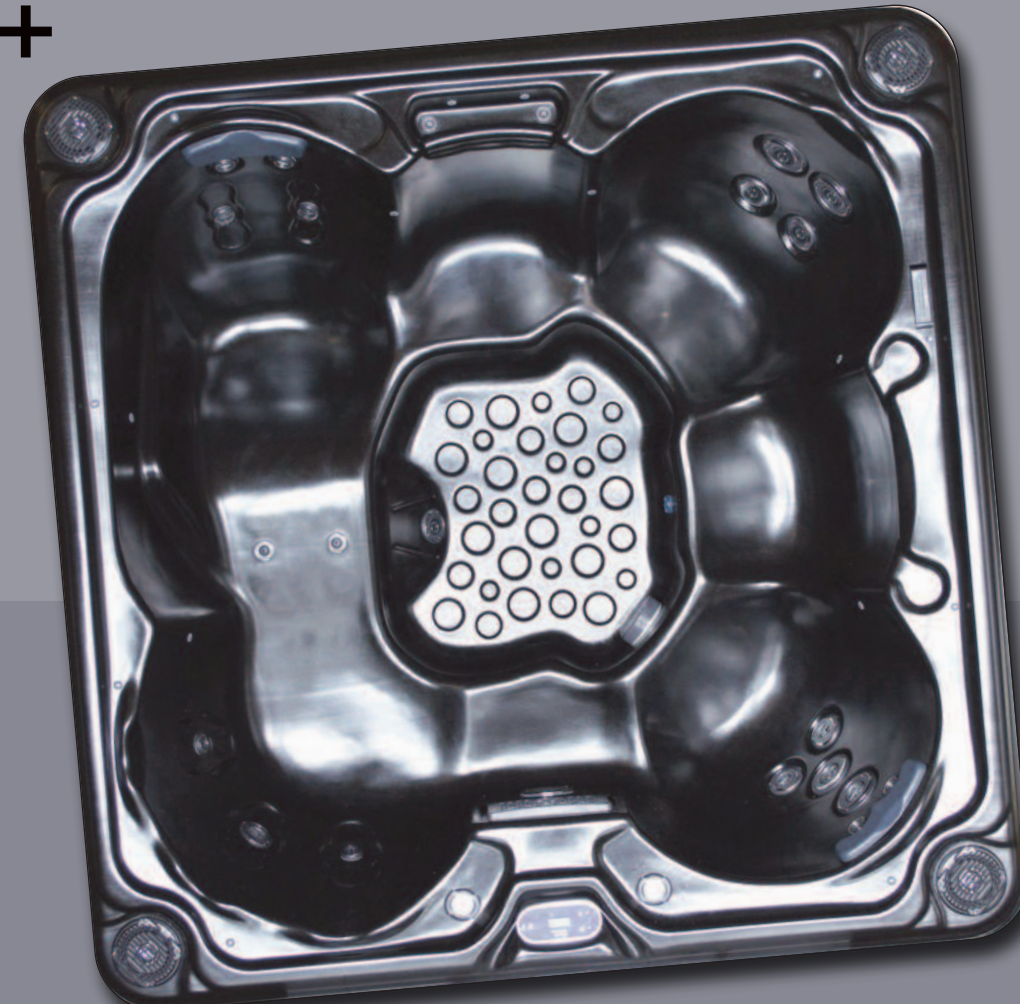
Royale P & P+

DIMENSIONS: 78" square / 198 CM
REGAL DEPTH: 34" / 86 CM
CAPACITY: 270 GAL / 1,022 LITERS
WEIGHT (NO WATER): 495 LBS / 225 KG
JETS: 17 (P), 21 (P+)
SEATING: 5-6

Royale P



Royale P+



VIKING SERIES



Featuring an industry best, super efficient 5.5kw heater.

KEY STANDARD FEATURES

	VIKING 3	AURORA 3	REGAL	REGAL ETS	ROYALE	ROYALE ETS	NOTES
Total Jets	20	31	31	31	31	31	
1 PUMP, 4 Horsepower	•	•	•	-	•	-	
2 PUMPS, 6 Total Horsepower	-	-	-	•	-	•	
Lifetime Shell Warranty	•	•	•	•	•	•	
Soft-Touch™ Slip-Resistant Surface	•	•	•	•	•	•	
His-n-Her Captain Seats	-	-	•	•	•	•	
Three-Directional Swivel Seats	-	-	•	•	•	•	
Lounger	-	•	-	-	•	•	
Neck Jets with Comfort Pillows	-	•	•	•	•	•	
Cup Holders	•	•	•	•	•	•	
Cascading Water Feature	-	•	•	•	•	•	
Balboa™ 500 System	•	•	•	-	•	-	
Balboa™ 502 System	-	-	-	•	-	•	
5.5kw Heater	•	•	•	•	•	•	
50 Square Foot Filtration	-	•	•	•	•	•	Viking 3 Installed with 20 Square Foot Filtration
Stainless Steel Accented Jets	•	•	•	•	•	•	
InfiniTree™ Premium Select Cabinet	-	•	•	•	•	•	Viking 3 InfiniTree Standard Cabinet
12 LED Points of Light	•	-	-	-	-	-	
24 LED Points of Light Including Perimeter and Exterior	-	•	•	•	•	•	
2lb Density Polyurethane Closed Cell Foam	•	•	•	•	•	•	Certified to California Energy Commission (CEC) Standards
4" to 2.5" Tapered Density Foam Core Cover	•	•	•	•	•	•	
Resin floor constructed cabinet	•	•	•	•	•	•	
Contact Chamber Ozone Injection Sanitizer	•	•	•	•	•	•	

KEY OPTIONAL FEATURES

Reflectix Insulation	o	o	o	o	o	o	
Foam Board Insulation	o	o	o	o	o	o	
SpaTouch™ Balboa BP power system upgrade	-	o	o	o	o	o	
BBA (SpaTouch™) Integrated Bluetooth Premium Audio	-	-	o	o	o	o	Is Available when Ordering with a SpaTouch™
Bluetooth Stereo System	-	-	o	o	o	o	Stereo Offered with Balboa 500 or 502 systems
AirX Therapy System	-	o	o	-	o	-	
Vibrosonic Therapy System	-	o	o	o	o	o	

• Standard o Option - Not available. Please consult your local Viking Spa Retailer for details.



Viking 3

DIMENSIONS: 72" Round / 183 CM
VIKING 3 DEPTH: 35" / 89 CM
CAPACITY: 250 GAL / 946 LITERS
WEIGHT (NO WATER): 330 LBS / 150 KG
JETS: 20
SEATING: 4-5

Aurora 3

DIMENSIONS: 60" x 84" / 152 CM x 213 CM
AURORA DEPTH: 34" / 86 CM
CAPACITY: 210 GAL / 795 LITERS
WEIGHT (NO WATER): 395 LBS / 179 KG
JETS: 31
SEATING: 2-3





Regal ETS

Regal & Regal ETS

DIMENSIONS: 78" square / 198 CM
REGAL DEPTH: 34" / 86 CM
CAPACITY: 290 GAL / 1,098 LITERS
WEIGHT (NO WATER): 495 LBS / 225 KG
JETS: 31
SEATING: 5-6

Royale & Royale ETS

DIMENSIONS: 78" square / 198 CM
REGAL DEPTH: 34" / 86 CM
CAPACITY: 270 GAL / 1,022 LITERS
WEIGHT (NO WATER): 495 LBS / 225 KG
JETS: 31
SEATING: 5-6



Royale



ELITE SERIES



All the efficiency, power, jetting ... and EVERYTHING you may not even realize you need!

KEY STANDARD FEATURES

	LEGACY 1	LEGACY 2	LEGEND 1	LEGEND 2	HERITAGE 1	HERITAGE 2	TRADITION 1	TRADITION 2	NOTES
Total Jets	41	51	41	51	61	71	61	71	
1 PUMP, 5 Horsepower	•	-	•	-	-	-	-	-	
2 PUMPS, 10 Total Horsepower	-	•	-	•	-	-	-	-	
2 PUMPS, 12 Total Horsepower	-	-	-	-	•	•	•	•	
Lifetime Shell Warranty	•	•	•	•	•	•	•	•	
Soft-Touch™ Slip-Resistant Surface	•	•	•	•	•	•	•	•	
His-n-Her Captain Seats	•	•	•	•	•	•	•	•	
Three-Directional Swivel Seats	-	-	•	•	-	-	•	•	
Lounger	-	-	•	•	•	•	-	-	
Neck Jets with Comfort Pillows	•	•	•	•	•	•	•	•	
Cup Holders	•	•	•	•	•	•	•	•	
Cascading Water Feature	•	•	•	•	•	•	•	•	
Balboa™ 500 System	•	-	•	-	-	-	-	-	
Balboa™ 502 System	-	•	-	•	•	•	•	•	
5.5kw Heater	•	•	•	•	•	•	•	•	
50 Square Foot Filtration	•	•	•	•	•	•	•	•	
Stainless Steel Accented Jets	•	•	•	•	•	•	•	•	
Volcano Jet	-	-	-	-	•	•	•	•	
InfiniTree™ Premium Select Cabinet	•	•	•	•	•	•	•	•	
Resin Floor Constructed Cabinet	•	•	•	•	•	•	•	•	
24 LED Points of Light Including Perimeter and Exterior	•	•	•	•	•	•	•	•	
2lb Density Polyurethane Closed Cell Foam	•	•	•	•	•	•	•	•	Certified to California Energy Commission (CEC) Standards
4" to 2.5" Tapered Density Foam Core Cover	•	•	•	•	•	•	•	•	
Contact Chamber Ozone Injection Sanitizer	•	•	•	•	•	•	•	•	

KEY OPTIONAL FEATURES

Arctic Package	o	o	o	o	o	o	o	o	
Tech Package	o	o	o	o	o	o	o	o	
Therapy Package	-	o	-	o	o	o	o	o	Features a BBA Stereo with SpaTouch™ Control
Ultimate Package	-	o	-	o	-	o	-	o	Vibrosonic Offered on Legacy 1 & Legend 1 models

• Standard o Option - Not available. Please consult your local Viking Spa Retailer for details.

The Legacy



Legacy 2



Legacy 1



Legacy 2 shown

DIMENSIONS: 86" x 86" / 218 cm x 218 cm

DEPTH: 37 1/2" / 95.25 cm

CAPACITY: 320 GAL / 1,211 LITERS

WEIGHT (NO WATER): 550 LBS / 249 KG

JETS: 41 (LEGACY 1)

51 (LEGACY 2)

SEATING: 6-7

The Legend



Legend 2



Legend 1



Legend 2 shown

DIMENSIONS: 86" x 86" / 218 cm x 218 cm

DEPTH: 37 1/2" / 95.25 cm

CAPACITY: 300 GAL / 1,136 LITERS

WEIGHT (NO WATER): 550 LBS / 249 KG

JETS: 41 (LEGEND 1)

51 (LEGEND 2)

SEATING: 6-7

The Heritage



Heritage 2



Heritage 1



Heritage 2 shown

DIMENSIONS: 92" x 92" / 234 cm x 234 cm

DEPTH: 37 1/2" / 95.25 cm

CAPACITY: 370 GAL / 1,400 LITERS

WEIGHT (NO WATER): 650 LBS / 295 KG

JETS: 61 (HERITAGE 1)

71 (HERITAGE 2)

SEATING: 6-7

The Tradition



Tradition 2



Tradition 1



Tradition 2 shown

DIMENSIONS: 92" x 92" / 234 cm x 234 cm
DEPTH: 37 1/2" / 95.25 cm
CAPACITY: 430 GAL / 1,628 LITERS
WEIGHT (NO WATER): 700 LBS / 318 KG
JETS: 61 (TRADITION 1)
71 (TRADITION 2)
SEATING: 7-8

Color Choices*

Silver Satin

Opal Satin

White Satin

Black Speck

Cover Colors

Black

Walnut

Black Elegance Pattern
(not available on round spas)

Cabinet Choices

Add contrast with **black corners** to your Coastal Gray, Walnut or Barnwood cabinets

Walnut

Barnwood

Coastal Gray

Black Slate

Round Cabinet Colors

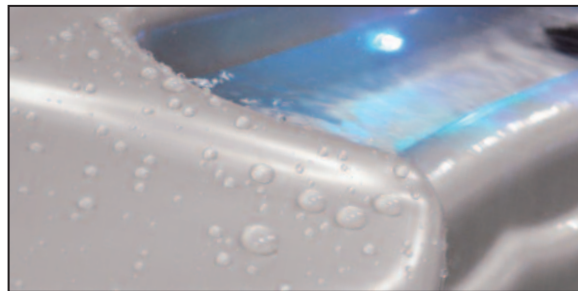
Coastal Gray

Walnut

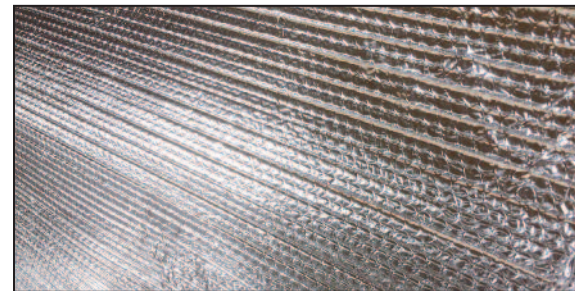
* Round spas only available in Opal or White.
* Black Speck only available in the Royale and Legend models.

Option Choices*

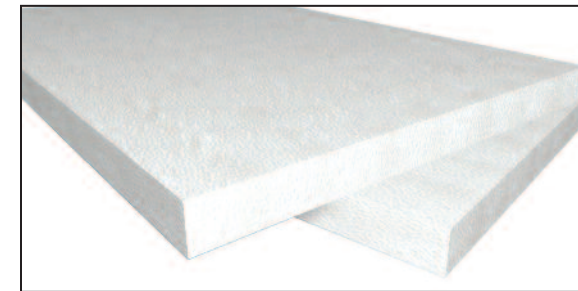
* Please consult your dealer on when these options are standard with a particular spa.



Contact Chamber Ozone Injection Sanitizer



Reflectix Insulation



Foam Board Insulation



AirX Jetting



Vibrosonic Jetting



Bluetooth Stereo



Cover Lifter



SpaTouch™ Controller



BBA Stereo for SpaTouch™ Controller



WiFi Module for SpaTouch™ Controller



Walnut or Gray Step



VIKING SPAS, INC. • 2725 PRAIRIE ST SW • WYOMING, MI 49519 • PH. 616.248.7800 • WWW.VIKINGSPAS.COM • INFO@VIKINGSPAS.COM

VIKING RESERVES THE RIGHT TO CHANGE OUR PRODUCT AT ANY TIME WITHOUT PRIOR NOTICE

